



## Move Up with Your Wheelchair or Scooter

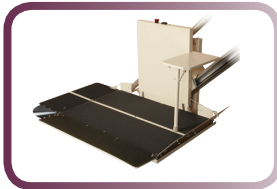
The innovative Sierra IL500 is ideal for transporting a user and their manual wheelchair up a straight stairway. Its 500-lb capacity will handle most wheelchairs up to 36" in length and offers an integrated seat option for use as a stair lift. Sierra does not require wall modifications, saving installation time and cost.

## Features & Benefits

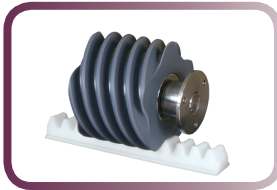
- *Easy Installation.* Lightweight for one-person installation; no major load-bearing wall modifications needed.
- *Free-Standing Post Kit.* Allows a wall-free installation, with the main carry load supported by step brackets.
- *Space Saving.* Just 13" wide when folded, yet Sierra carries up to 500 lbs.
- *Platform Options.* Right, Left, 90°; 25" or 27.5" widths
- *Residential Use Only*



Space Saving. Just 13" wide when folded, yet Sierra carries up to 500 lbs.



Sierra IL500 with optional fold-down seat, emergency stop switch and 90° platform for multi-sided access.



Patented Worm Drive is energy efficient and needs no messy grease or lubricants.



Safety sensors on carriage and platform stop the lift instantly at obstacles.

## Optional Accessories

- 27.5" x 36" Platform (36.5" minimum width required):..... IL515
- 27.5" x 36" 90 Degree Exit Platform:..... IL520
- Fold-Down Seat:..... IL525
- Free-Standing Post Kit (each - # treads / 2):..... IL530
- Key Lock (Unit Only - Disable All Controls):..... IL510
- Emergency Stop Button: ..... IL511
- Additional Foot of Track (Track, Handrail & Mounting Brackets): ..... IL500R

Specifications	Sierra IL500
Rated Load:	500 lbs. (227 kg)
Drive:	Rack and worm gear / 24 VDC 1/8 HP motor w/ brake
Power Supply:	120 VAC 15 A grounded circuit
Control Circuit:	24 VDC
Platform:	25" x 36" Manual fold, gas shock assisted Power folding ramps for entry and exit
Folded Width:	13" folded
Travel:	40 feet maximum
Speed:	14 feet per minute
Controls:	Constant pressure rocker switch on platform Infrared Call / Send Control
Safety Design Standards:	ASME A18.1, Section 6 - Incline Platform Lifts ETL CAN/CSA B44.1 / ASME A17.5 - Elevator & Escalator Equipment ETL Listed 3148125
Safety Features:	Overspeed governor Upper and lower landing limits Upper and lower final limit Ramp obstruction sensors Under platform safety pan obstruction sensors Drive chassis obstruction sensors Non-skid surface
Warranty:	2-year on parts 10-year on gear rack 1-year on batteries